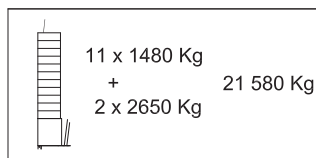

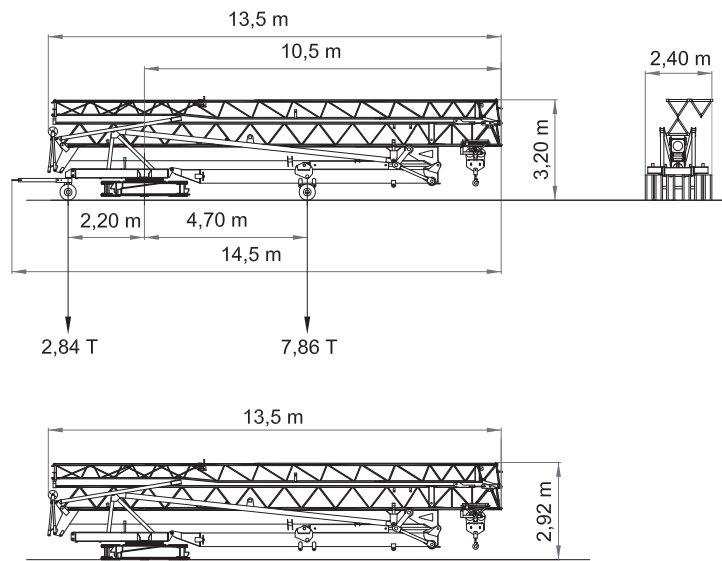


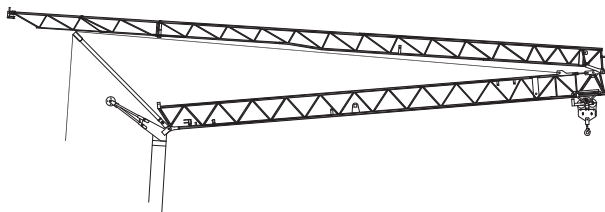
Peso del lastre / Weight ballast





 Peso de la grúa sin lastre / Dead weight without ballast / Konstruktionsgewicht ohne ballast / Poids de construction sans lest / Peso della gru senza zavorra





Curvas de cargas - Load diagrams - Lastkurven - Courbes de charges - Curve di carico - График грузоподъёмности

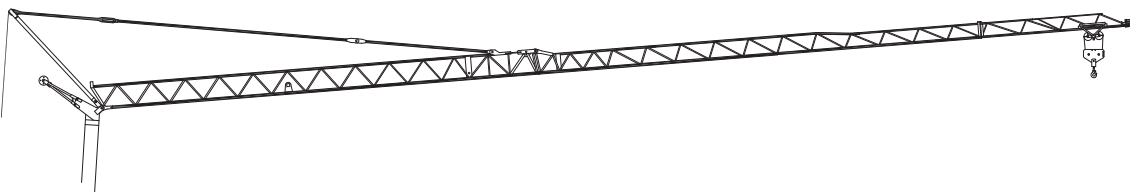



	11 x B = 16280 Kg + 2 x A = 5300 Kg
	21580 Kg


14,6	m	
2000	Kg	


	11 x B = 16280 Kg + 2 x A = 5300 Kg
	21580 Kg


13,7	14,1	14,6	m	
4000	3866	3700	Kg	





	11 x B = 16280 Kg + 2 x A = 5300 Kg
	21580 Kg


18,25	20	22	24	26	28	30	32	m	
2000	1788	1590	1428	1293	1180	1083	1000	Kg	

10,5	12	14	16	18	18,25	20	22	24	26	28	30	32	m	
4000	3357	2743	2309	1987	1950	1738	1540	1378	1243	1130	1033	950	Kg	

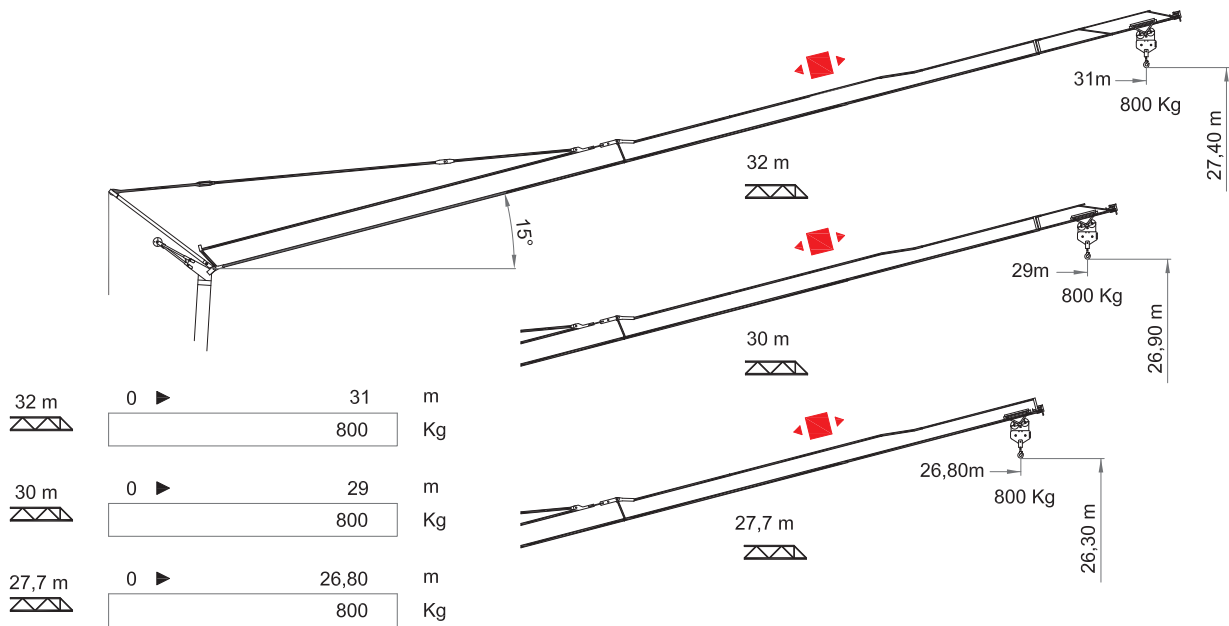
19,75	20	22	24	26	28	30	m	
2000	1970	1753	1576	1430	1305	1200	Kg	

11,3	12	14	16	18	19,75	20	22	24	26	28	30	m	
4000	3691	3019	2545	2192	1950	1920	1703	1526	1380	1255	1150	Kg	

20,65	22,7	24,7	26,7	27,7	m	
2000	1783	1609	1464	1400	Kg	

11,75	12,7	14,7	16,7	18,7	20,65	22,7	24,7	26,7	27,7	m	
4000	3615	2994	2546	2208	1950	1733	1559	1414	1350	Kg	

## Flecha izada - Luffing jib - Ausleger in steilstellung - Flèche relevée - Braccio impennato



## Mecanismos - Mechanisms - Antriebe - Mécanismes - Meccanismi - Приводы

10 Hp (7,5Kw) 3V  
H.B.G. 21m Ø10mm

	m/min	5	20,5	41	2,5	10,25	20,5
	Kg	2000	2000	1000	4000	4000	2000
	Kw	1,8	7,5	7,5	1,8	7,5	7,5
	m/min	19		38	19		38
	Kg	2000		2000	4000		2000
	Kw	1,1		2,2	1,1		2,2
	r.p.m	0,25	0,5	0,8	0,25	0,5	0,8
	N.m.	30			30		
	Kw	4			4		

 CEI 38 IEC 38	400 V 50 Hz	380 V 60 Hz	40 kVA	4x10mm <sup>2</sup>
----------------------	----------------	----------------	--------	---------------------

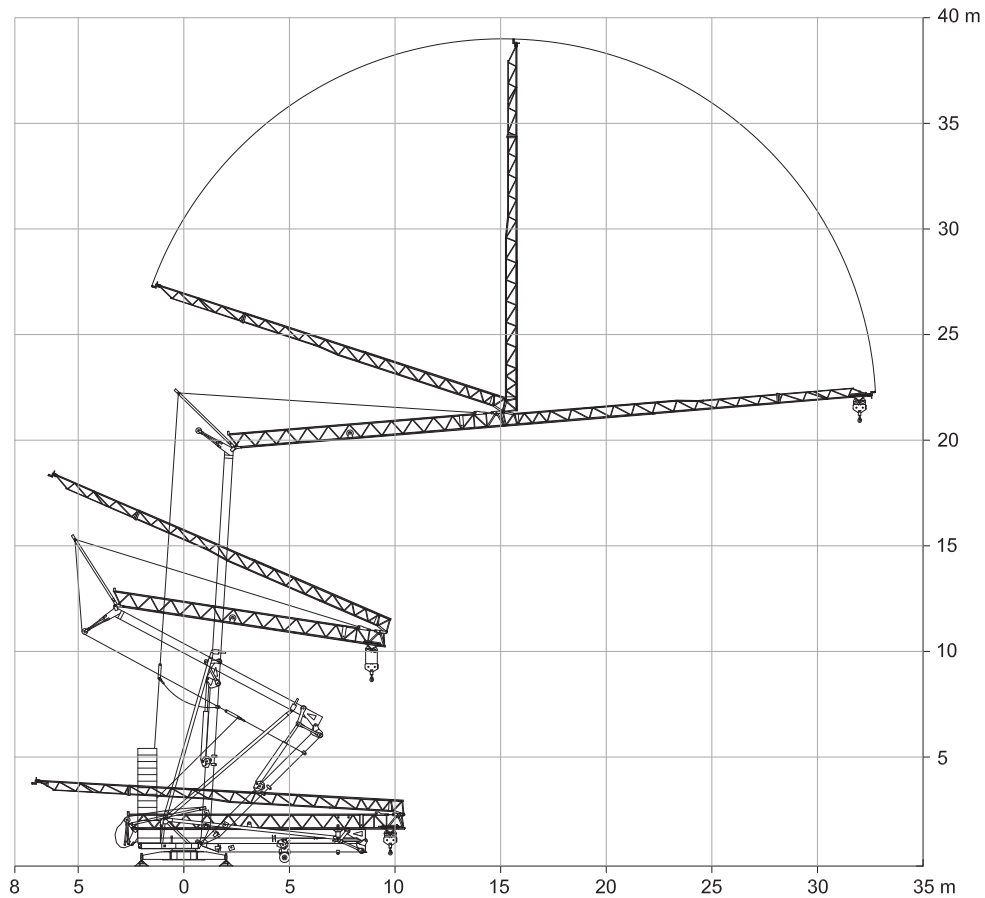
10Hp (7,5Kw) INV  
H.B.G. 21m Ø10mm

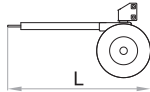
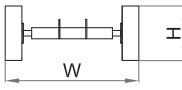
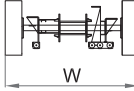
	m/min	5	20,5	40	2,5	10,25	20
	Kg	2000	2000	1000	4000	4000	2000
	Kw	7,5			7,5		
	m/min	19		45	19		45
	Kg	2000		2000	4000		2000
	Kw	2,2		2,2	2,2		2,2
	r.p.m	0,25	0,5	0,8	0,25	0,5	0,8
	N.m.	30			30		
	Kw	4			4		

 CEI 38 IEC 38	400 V 50 Hz	380 V 60 Hz	40 kVA	4x10mm <sup>2</sup>
----------------------	----------------	----------------	--------	---------------------

- Elevación / Hoisting / Heben / Levage / Sollevamento
- Distribución / Trolleying / Katzfahren / Distribution / Distribuzione
- Orientación / Slewing / Schwenken / Orientation / Rotazione
- Montaje / Erection / Montage / Montage / Montaggio

Montaje - Erection - Montage - Montage - Montaggio



		L (m)	W (m)	H (m)	Kg
<b>Eje de transporte delantero</b> Road transport axle front / Transportachse vorne Essieux de transport avant / Asse di trasporto anteriore		2,05	1,24	1,07	440
<b>Eje de transporte trasero</b> / Road transport axlebehind / Transportachse hinten / Essieux de transport arrière / Asse di trasporto posteriore		0,89	2,40	0,89	346
<b>Eje de transporte trasero con freno</b> Transportachse hinten mit brense Essieux de transport arrière avec frein Asse di trasporto posteriore con freno		1,25	2,40	1,35	960

**ESPECIFICACIONES SUJETAS A MODIFICACIONES SIN PREVIO AVISO.**  
 Specifications subject to modification without notice.

**DECLINAMOS TODA RESPONSABILIDAD DERIVADA DE LA INFORMACION PROPORCIONADA.**

This information is supplied without liability.