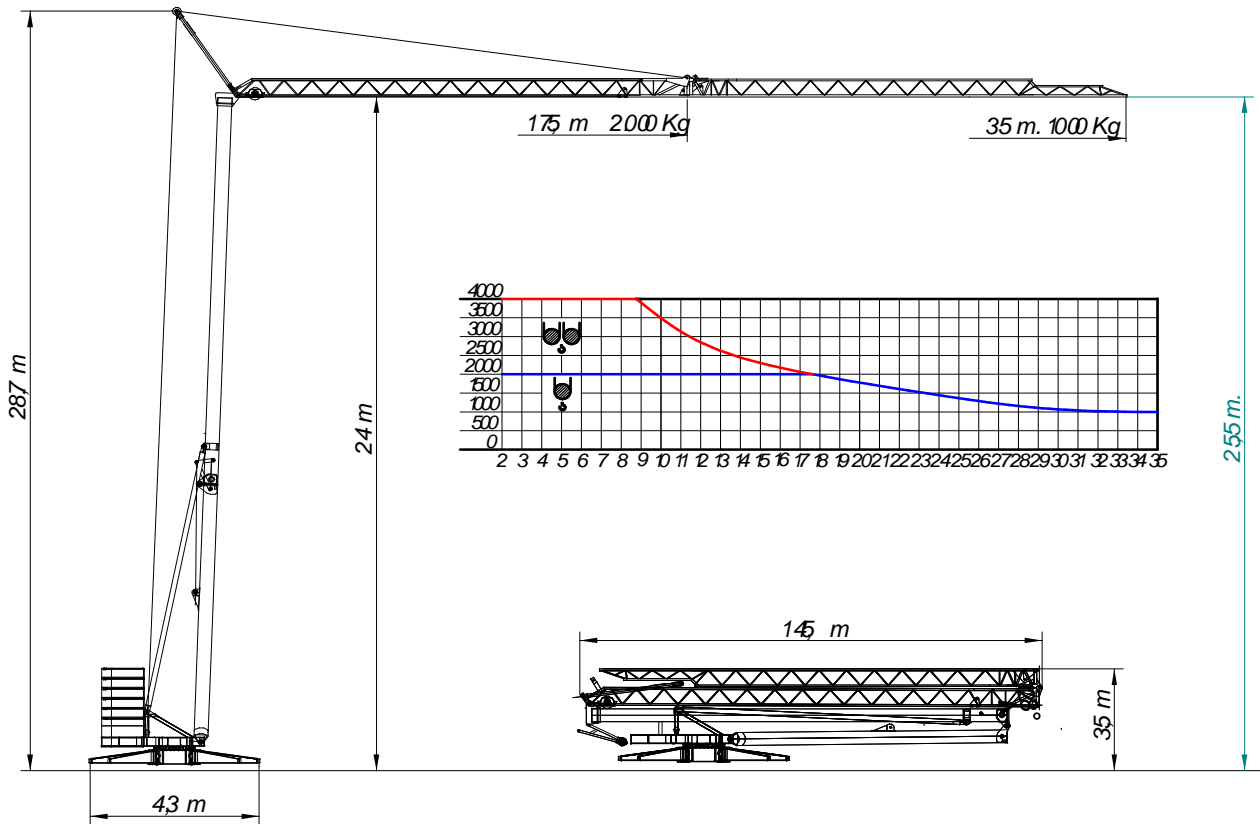


SAEZ H-35



- HEIGHT UNDER JIB 24 m
- HEIGHT UNDER HOOK 23 m
- JIB REACH 35 m
- MAX. LOAD 4000 Kg
- LOAD AT JIB END 1000 Kg
- HOOK REACH WITH MAX LOAD 8,75 m
- 3 HOISTING SPEEDS 6-20-40 m/min
- 2 TROLLEYING SPEEDS 3-30 m/min
- 2 SLEWING SPEEDS 0.3-1 rpm
- POWER HOISTING 10 CV
- POWER SLEWING 2.5 CV
- POWER TROLLEYING 2.5 CV
- CRANE WEIGHT 12.500 Kg
- COUNTERWEIGHTS 500 Kg
- MAX. REACTION 24.000 daN
- COUNTERWEIGHTS RADIUS 2,5 m

LOAD DIAGRAMS

HOOK REACH (m)	8,75	11,6	17,5	19,4	23,3	29	35
MAX. LOAD (m)	4000	3000	2000	1800	1500	1200	1000