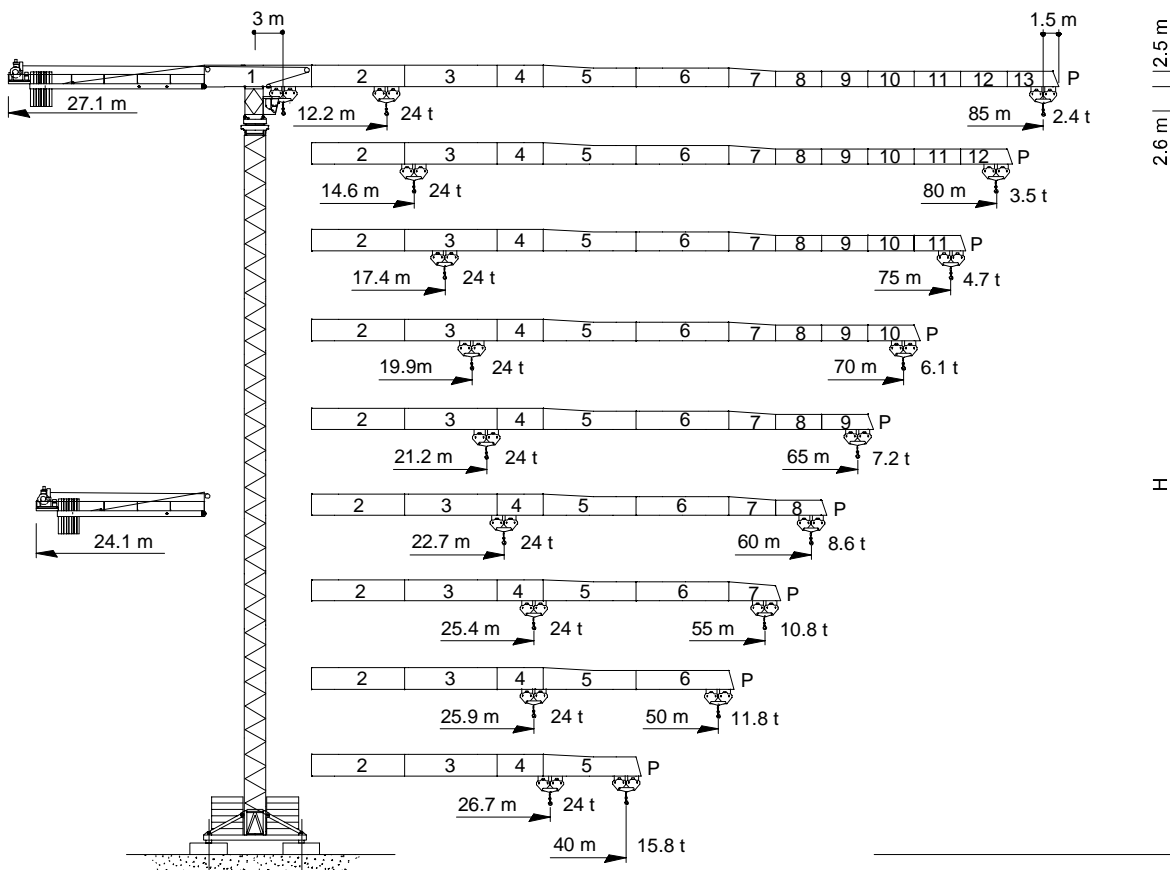


## Gru a torre "Flat Top" "Flat Top" Tower Crane • Grue à tour "Flat Top" "Flat Top" Turmdrehkran • Grua torre "Flat Top"



CE FEM 1.001 A3  
(A2 )

THE **ULTIMATE** CRANE™

Dati illustrativi non impegnativi  
Con riserva di modifica senza preavviso

Specifications and data not binding  
Subject to modification without notice

Données techniques seulement indicatives  
Modifications réservées sans préavis

Angaben und Beschreibung unverbindlich  
Änderungen vorbehalten ohne weitere Mitteilung

Dibujos y datos sin compromiso  
Modificaciones reservadas sin preaviso

UTEDOC. REV.002 09\_2002

CTT 561-24 HD23



# CTT 561-24

Diagramma di portata  
Load Diagram

I  
GB

Curbes de charges  
Lastkurven

F  
D

Curvas de cargas

E

## CTT 561-24

m	20	25	30	35	40	45	50	55	60	65	70	75	80	85
12 t - 23.1 m	12	10.95	8.89	7.43	6.35	5.51	4.84	4.30	3.85	3.47	3.14	2.86	2.62	2.40
24 t - 12.2 m	13.29	10.10	8.02	6.54	5.45	4.60	4.93	3.38	2.92	2.54	2.21	1.93	1.68	1.50
12 t - 28.0 m	12	12	11.12	9.35	8.03	7.02	6.21	5.55	5	4.54	4.14	3.80	3.50	
24 t - 14.6 m	16.67	12.83	10.30	8.52	7.20	6.18	5.36	4.70	4.15	3.68	3.29	2.94	2.70	
12 t - 33.2 m	12	12	12	11.31	9.74	8.53	7.57	6.78	6.13	5.58	5.11	4.70		
24 t - 17.4 m	20.48	15.84	12.80	10.65	9.06	7.82	6.84	6.04	5.38	4.82	4.34	4		
12 t - 38.2 m	12	12	12	12	11.42	10.03	8.92	8.02	7.27	6.64	6.10			
24 t - 19.9 m	23.81	18.52	15.05	12.60	10.78	9.37	8.25	7.34	6.58	5.94	5.50			
12 t - 41.0 m	12	12	12	12	12	10.85	9.66	8.69	7.88	7.20				
24 t - 21.2 m	24	19.93	16.21	13.59	11.65	10.14	8.94	7.97	7.16	6.60				
12 t - 44.4 m	12	12	12	12	12	11.81	10.52	9.47	8.60					
24 t - 22.7 m	24	21.56	17.60	14.81	12.73	11.12	9.84	8.80	8.10					
12 t - 49.9 m	12	12	12	12	12	12	11.98	10.80						
24 t - 25.4 m	24	24	19.98	16.84	14.50	12.69	11.26	10.30						
12 t - 50.0 m	12	12	12	12	12	12	12							
24 t - 25.9 m	24	24	20.45	17.24	14.85	13	11.80							
12 t - 40.0 m	12	12	12	12	12									
24 t - 26.7 m	24	24	21.14	17.82	15.80									

Altre installazioni  
Other configurations

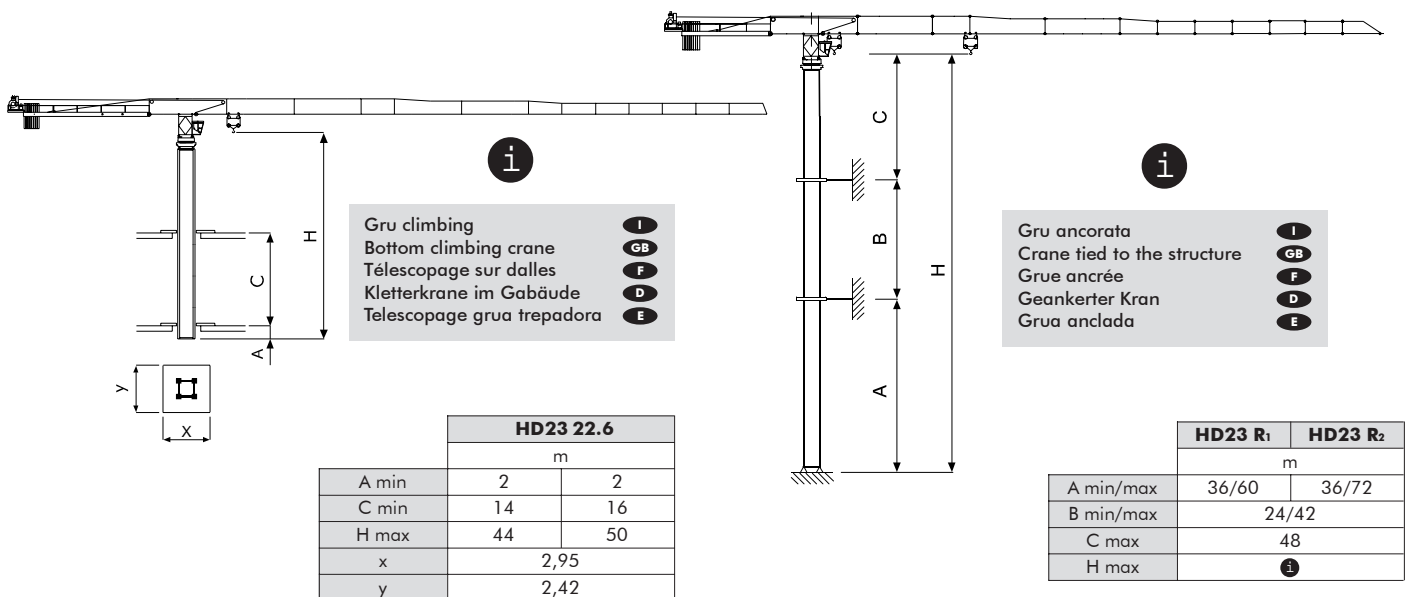
I  
GB

Autres implantations  
Aufstellungsmöglichkeiten

F  
D

Otras implantaciones

E





# CTT 561-24

Torre **I**

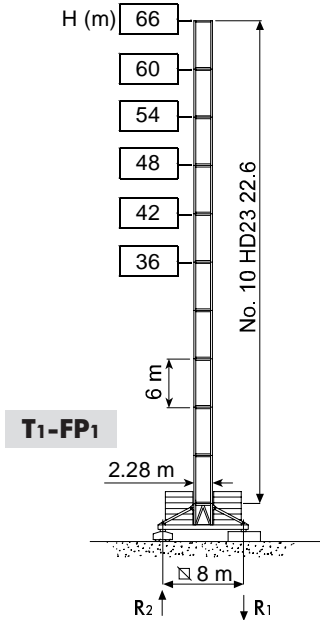
Mast **GB**

Mât **F**

Turm **D**

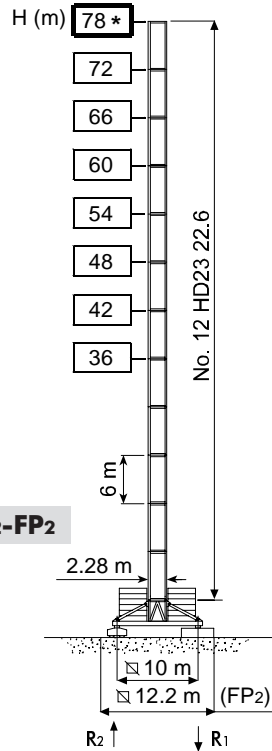
Mástil **E**

## HD23



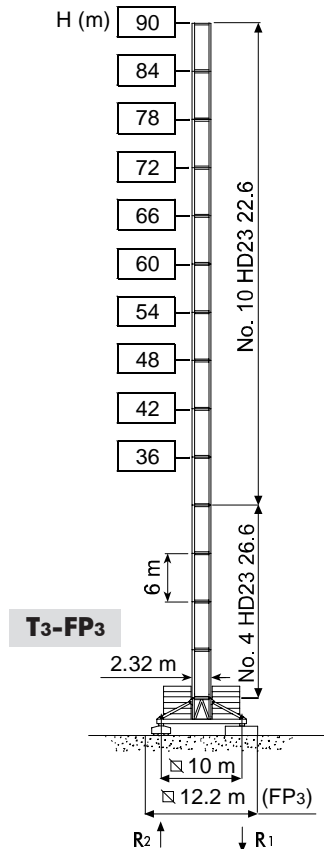
**T1-FP1**

R1	1681 kN ●	1513 kN ◊
R2		121 kN ◊
	125 t	



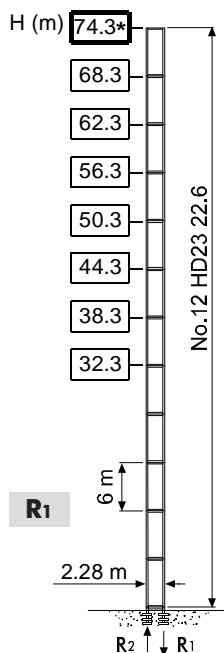
**T2-FP2**

R1	1487 kN ●	1605 kN ◊
R2		134 kN ◊
	145 t	



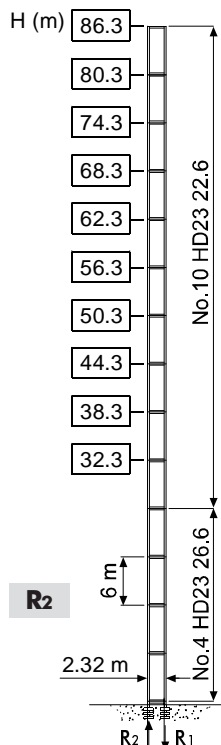
**T3-FP3**

R1	1814 kN ●	2195 kN ◊
R2		269 kN ◊
	165 t	



**R1**

R1	3651 kN ●	4263 kN ◊
R2	2806 kN ●	3547 kN ◊
	115 t	



**R2**

R1	4188 kN ●	6033 kN ◊
R2	3238 kN ●	5218 kN ◊
	135 t	

\* ( 75 m - 80 m - 85 m )

- |          |  |           |
|----------|--|-----------|
| <b>H</b> | Altezza massima sotto gancio                               | <b>I</b>  |
| ●        | In servizio  |           |
| ◊        | Fuori servizio   |           |
|          | A vuoto, senza zavorra, braccio max., altezza max.         |           |
| <b>H</b> | Max. under hook height                                     | <b>GB</b> |
| ●        | In service   |           |
| ◊        | Out of service   |           |
|          | Without load, without ballast, max. jib and max. height    |           |
| <b>H</b> | Hauteur maxi. sous crochet                                 | <b>F</b>  |
| ●        | En service   |           |
| ◊        | Hors service   |           |
|          | A vide, sans lest, avec flèche et hauteur maximum          |           |
| <b>H</b> | Höchste Hackenhöhe   | <b>D</b>  |
| ●        | In Betrieb   |           |
| ◊        | Alternativlösung   |           |
|          | Ohne Last und Ballast, mit Maximalausleger und Maximalhöhe |           |
| <b>H</b> | Maxima altura bajo gancho                                  | <b>E</b>  |
| ●        | En servicio  |           |
| ◊        | Fuera de servicio  |           |
|          | Sin carga, sin lastre, con pluma y altura máxima           |           |



# CTT 561-24

Meccanismi  
Mechanisms

I  
GB

Mécanismes  
Antriebe

F  
D

Mecanismos

E

216 * kVA	400 V - 50 Hz / 460 V - 60 Hz	CE 87/405

\* Gru senza traslazione / Crane without travelling equipment / Grue sans translation / Krane ohne Schienenfahren / Grúa sin traslación

		m/min	†	kW		
	110 AWL 120 LLC		0 ⇌ 40	12	110	630 m
			0 ⇌ 55	8.6		
			0 ⇌ 75	6		
			0 ⇌ 102	4.2		
			0 ⇌ 116	0.6		
			0 ⇌ 20	24		
			0 ⇌ 27.5	17.2		
			0 ⇌ 37.5	12		
			0 ⇌ 51	8.4		
			0 ⇌ 58	1.2		

		400 V - 50 Hz	
	DCC 5 112	0 ⇌ 95 m/min	11 kW
	SSR 4 4 80	0.73 r.p.m.	4 × 80 Nm
	▲ TSR 2RG 4M8	12 ⇌ 24 m/min	4 × 80 Nm
	● TSR 4RG 4M8		

	▲	●
	Max. H [m]	
T <sub>1</sub>	54	> 54
T <sub>2</sub>	66	> 66
T <sub>3</sub>	-	90

	Sollevamento	I	Hoisting	GB	Levage	F	Heben	D	Elevación	E
	Traslazione carrello		Trolleying		Distribution		Katzfahren		Distribución	
	Rotazione		Slewing		Orientation		Schwenken		Orientación	
	Traslazione		Travelling		Translation		Schienenfahren		Traslación	
	Direttiva sul livello acustico		Directive on noise level		Directive sur le niveau acoustique		Richtlinie für den Schall-Leistungspegel		Directiva sobre el nivel acustico	
	Consultateci		Consult us		Nous consulter		Auf Anfrage		Consultarnos	
	Potenza totale richiesta		Power requirements		Puissance totale nécessaire		Geforderte Stromstärke		Potencia necesaria	
	Alimentazione		Power supply		Alimentation		Stromversorgung		Alimentación	

## Gru Comedil s.r.l.

A Terex Company

Via S. Egidio 42/A, 33074 Fontanafredda (PN) - Italy  
Tel. (+39) 0434 567 311 - Telefax (+39) 0434 998631

Internet e-mail: [info@comedil.com](mailto:info@comedil.com)  
Internet home page: <http://www.comedil.com>

## Divisione Automontanti

Via Alessandrina, 25 - 20095 Cusano Milanino (MI) - Italy  
Tel. (+39) 02 613 16011 - Telefax (+39) 02 613 16034

Internet e-mail: [info.CBR@comedil.com](mailto:info.CBR@comedil.com)

